

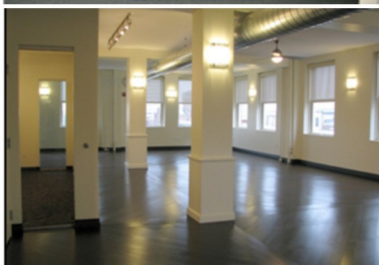


**CAPITOL  
EQUITIES**

# FOR LEASE

View all of our properties at [capitolequities.com](http://capitolequities.com)

**5 EAST LONG STREET | COLUMBUS, OHIO 43215**



## READY FOR IMMEDIATE MOVE-IN

### Available Suites:

Floor:	Suite #:	Suite Size:	Gross Rent:
6th Floor	612	270 sf	\$13.75 psf
10th Floor	1009	670 sf	\$13.75 psf

**Utilities:** Included in gross rent rate

### Building Amenities:

- Prominent building at the corner of Long & High
- Two blocks from the Capitol Building
- Abundant parking, restaurants and shops in walking distance including metered parking around the building
- Next door to Metro Fitness General
- Loft-style elevators can open into suites for full floor tenants.

**LIKE TO GET MORE INFO?**  
We'd love to hear from you.

### Ed Fellows

[efellows@capitolequities.com](mailto:efellows@capitolequities.com)  
P: 614.760.5660 x 123

### J.R. Kern

[jrkern@capitolequities.com](mailto:jrkern@capitolequities.com)  
P: 614.760.5660 x 124

### Capitol Equities Realty

P: 614.760.5660  
F: 614.798.0015  
580 N. Fourth Street, Suite 120  
Columbus, Ohio 43215  
[capitolequities.com](http://capitolequities.com)

The information contained herein was furnished by sources believed to be reliable, but it is not guaranteed, warranted or represented by Capitol Equities. The presentation of this property is submitted subject to errors, omissions, change of price or condition prior to sale or lease, or withdrawn without notice.

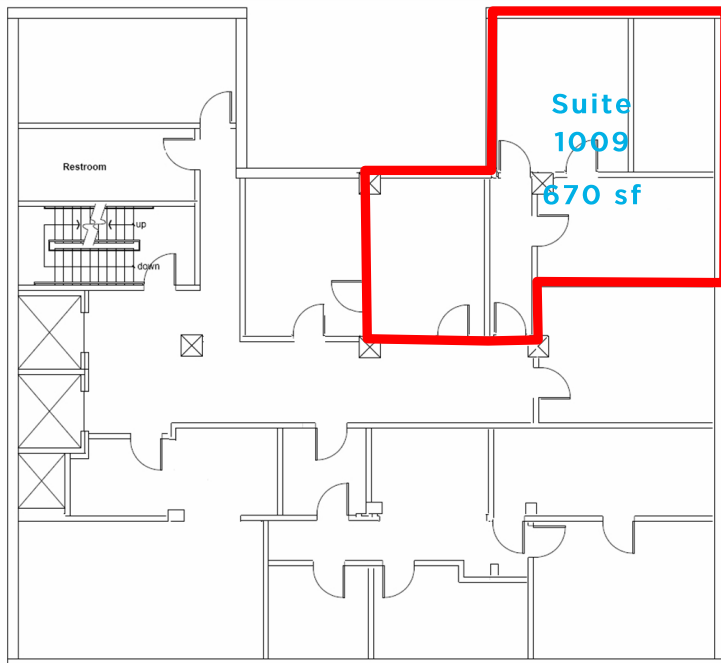


CAPITOL  
EQUITIES

FOR LEASE

5 EAST LONG STREET | COLUMBUS, OHIO 43215

TENTH FLOOR: 670 & 400 SF AVAILABLE



SIXTH FLOOR: 270 SF AVAILABLE

